

MEMO

Aimsak

Operation Instructions

BLDC

BL18M70

18 V Brushless Impact Driver

BL18Q70

18 V Brushless Impact Wrench

BL18X70

18 V Brushless Impact Driver & Wrench



BL18M70

BL18Q70

BL18X70

Index

- 1. Specification 2
- 2. Exploded view 2~3
- 3. Safety Instructions 4~7
- 4. Operating Instructions 8~14
- 5. Maintenance & Storage 15
- 6. Warranty 15

⚠ [Caution]

**Do not use battery from Aimsak in the product
& charger from other brand.**

It may occur serious defect of battery in use and Aimsak quality assurance (A/S), PL Law will not be provided.

Aimsak

MADE IN KOREA (2020-12)

PR143097 / A0

Aimsak Inc.

【Tool Specification】

► **Specification** ※ Check model number of purchased product and read operation instructions.

Model	BL18M70	BL18Q70	BL18X70
Spec	18V Brushless Impact Driver	18V Brushless Impact Wrench	18V Brushless Impact Driver & Wrench
Voltage	DC 18 Vd.c.		
Chuck capacity	6.35 mm (1/4" HEX)	12.7 mm (1/2" Square)	6.35 mm (1/4" HEX) / 12.7 mm (1/2" Square)
No load speed	0~1,200 / 2,800 / 3,400 min ⁻¹	0~1,000 / 2,000 / 2,700 min ⁻¹	0~1,200 / 2,800 / 3,100 min ⁻¹
Impact per minute	0~1,100 / 3,000 / 3,600 ipm	0~900 / 2,200 / 2,900 ipm	0~1,100 / 3,000 / 3,300 ipm
Max. torque	210 N·m	315 N·m	210 N·m
Switch	Various Speed Control		
Battery	Li-ion 18V		
Net Weight	1.53 kg	1.64 kg	1.65 kg
Charger	ALC 4640M		
Charger input	AC 220 - 240 V / 50 - 60 Hz		

※ Check model number of purchased product and read operation instructions.

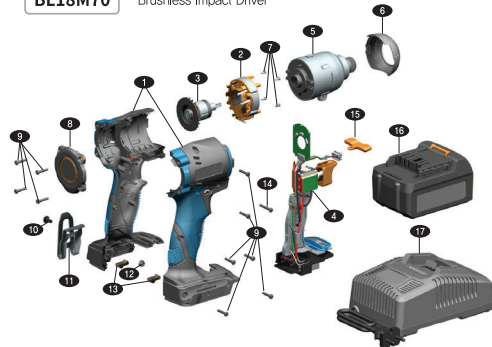
※ Aimsak battery is designed to be used for Aimsak products only. Battery is compatible with same voltage capacity (21.6V, 18V, 14.4V, 10.8V, 7.2V) if battery type (ex. Slide, plug-in) is the same.

► Contents

Model	BL18M70	BL18Q70	BL18X70
Cordless Tool	1 EA	1 EA	1 EA
Battery	2 EA	2 EA	2 EA
Charger	1 EA	1 EA	1 EA
Operation Instructions	1 EA	1 EA	1 EA
Carrying Case	1 EA	1 EA	1 EA

【Exploded View】 ※ Product exploded view is subject to change without notice due to change of function and parts for product improvement.

BL18M70 * Brushless Impact Driver

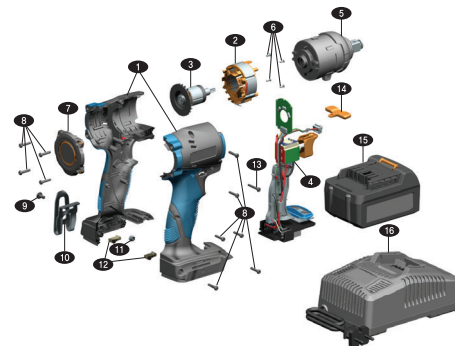


Part Name

NO.	Part Name	Q'ty
1	Housing	1
2	Stator	1
3	Rotor	1
4	Switch	1
5	Gear Box	1
6	Cap Cover Gear box	1
7	Screw (+)	4
8	Cover Rear	1
9	Star Screw	10
10	Screw (+)	1
11	Belt Hook	1
12	Nut	1
13	Rubber Bump A	2
14	Star Screw	1
15	Reversing Rever	1
16	Battery	2
17	Charger	1

BL18Q70

* Brushless Impact Wrench

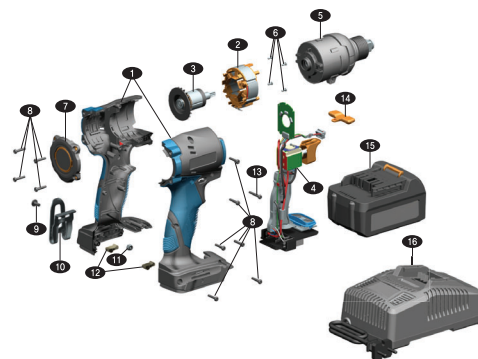


Part Name

NO.	Part Name	Q'ty
1	Housing	1
2	Stator	1
3	Rotor	1
4	Switch	1
5	Gear Box	1
6	Screw (+)	4
7	Cap Cover Gear box	1
8	Star Screw	10
9	Screw (+)	1
10	Belt Hook	1
11	Nut	1
12	Rubber Bump A	2
13	Star Screw	1
14	Reversing Rever	1
15	Battery	2
16	Charger	1

BL18X70

* Brushless Impact Driver & Wrench



Part Name

NO.	Part Name	Q'ty
1	Housing	1
2	Stator	1
3	Rotor	1
4	Switch	1
5	Gear Box	1
6	Screw (+)	4
7	Cap Cover Gear box	1
8	Star Screw	10
9	Screw (+)	1
10	Belt Hook	1
11	Nut	1
12	Rubber Bump A	2
13	Star Screw	1
14	Reversing Rever	1
15	Battery	2
16	Charger	1

Safety Instructions

Please read the Manual thoroughly and observe the safety instructions. Keep manual in a safe and handy place for easy reference.

Make sure to observe the following safety instructions at all times to remain safe as from electric shock, fire or any other hazard while using or charging the tool. Do not become careless or inattentive after becoming familiar with its usage; always follow the safety rules. Any violation of the safety instructions or incorrect use of the tool may result in serious injury. The terms “power tool” in the CAUTION refers to either electric or battery-operated power tool.

1. Work area

- ▶ **Keep work area clean and well lit.** Cluttered and dark area may cause injuries.
- ▶ **Do not operate power tools in explosive atmospheres, such as in the presence of flammable liquids, gases or dust.** Power tools create sparks which may ignite the dust or fumes.
- ▶ **Keep children and bystanders away while operating power tool.** Distractions can cause you to lose control.

2. Electrical safety

- ▶ **Power tool plugs must match the outlet. Never modify the plug in anyway. Do not use any adapter plugs with earthed (grounded) power tools.** Unmodified plugs and matching outlets will reduce risk of electric shock.
- ▶ **Avoid body contact with the earthed or grounded surface, such as pipes, radiators, or refrigerators.** There is an increased risk of electric shock if your body is earthed or grounded.
- ▶ **Do not expose power tools to rain or wet conditions.** Water entering into power tool will increase the risk of electric shock.
- ▶ **Do not abuse the cord. Never use the cord for carrying, pulling or unplugging the power tool. Keep the cord away from heat, oil, sharp edges or moving parts.** Damaged or entangled cords increase the risk of electric shock.
- ▶ **When operating power tools at outdoor, use an extension cord suitable for outdoor use.** Use of a cord suitable for outdoor reduces the risk of electric shock.
- ▶ **If operating a power tool in a damp location is unavoidable, use a residual current device (RCD) protected supply.** Use of a RCD reduces the risk of electric shock.
- ▶ **When working on possible contact of wire or cord with hidden fastener, grab insulated surface of power tools.** If fastener contacts with “conductive” wire, exposed metal part of power tools can be conducted and there is risk of electric shock.
- ▶ **Use appropriate power input for charger.**

3. Personal safety

- ▶ **Stay alert, watch what you are doing and use common sense when operating power tools.** A moment of inattention while operating power tools may result in serious personal injury.
- ▶ **Do not use power tools while you are tired or under the influence of drugs, alcohol or medication.** Inattention while operating power tools may result in serious personal injury.

- ▶ **Use personal protective equipment. Always wearing the eye protection.**

The use of protective equipment such as dust mask, non-skid safety shoes, hard hat or hearing protection under appropriate conditions will reduce the risk of personal injury.

- ▶ **Be careful to do not start the tool accidentally. Ensure the switch is in the OFF position before connecting to a power source and/or battery pack, picking up or carrying the tool.** Carrying power tools with a finger on the switch or turning tools on while their switch is in the ON position invites accidents. Place reversing lever in neutral position while storing or carrying the tool.
- ▶ **Do not use the tool in an awkward position. Keep proper footing and stay balanced at all times to enable better control of the power tool in unexpected situations.**
- ▶ **Dress properly. Do not wear loose clothes or jewelry. Keep hair, clothing and gloves away from moving parts.** Loose clothes, jewelry or long hair can be caught in moving parts.

4. Power Tool Use and Care

- ▶ **Do not use too much force when using the tool.**

Select the right tool for the purpose and application to enhance work efficiency and safety. Be advised that any use of a tool that doesn't meet its specifications may result in decreased performance and shortened lifespan.

- ▶ **Do not use a tool with a broken power switch.**

Any power tool with a broken switch is dangerous and must be repaired.

- ▶ **Disconnect the plug from the power source and/or the battery pack from the power tool before making any adjustments, changing accessories or storing power tools.**

These preventive safety measures reduce the risk of the accidental start of power tools.

- ▶ **Keep power tools out of the reach of children. Do not allow a person who is unfamiliar with the power tools or has failed to read the Manual to operate them.**

Power tools can be dangerous in the hands of untrained users.

- ▶ **Handle power tools with caution. Check for misalignment or binding of moving parts, breakage of parts and any other condition that may affect the power tool operation.** If any defect is found, make sure that it is repaired before use. Poor maintenance often causes accidents.
- ▶ **Keep cutting tools sharp and clean.** Well-managed cutting tools with sharp cutting edges are well operated and easy to control.
- ▶ **Before using power tools, accessories and tools, observe the instructions and guidelines for a particular type and consider work conditions and details.** The use of such items for purposes other than those specified herein may result in hazardous situations.
- ▶ **Before operation, tightly fix the work piece. Do not hold it by hand.** This may result in bodily injury. Make sure that it is fixed by a holding device before operation.
- ▶ **Check if the power is switched off before connecting the power cable or inserting the battery.** If the battery is inserted when the power is ON, an accident may occur.
- ▶ **If a tool halts due to overload during operation, stop the operation immediately.** If it is used in overload conditions, its lifespan can drop considerably.

5. Cautions for Battery and Charger

- ▶ **Do not use the battery and charger in the vicinity of flammable materials** (e.g., lacquer, paint, benzene, thinner, gasoline, etc.). Doing so can lead to fire or explosion.
- ▶ **Do not expose the battery and charger to sunlight or other high-temperature environments, and keep away from fire.** Failure to do so may cause fire or explosion.
- ▶ **Check if the battery and charger terminals are stained with metal powders or dirt.** Such contamination may result in electric shock.
- ▶ **Do not leave the tool in a place where strong static electricity can occur.** Doing so may result in fire or explosion.
- ▶ **Make sure that there is no small metal pieces** (e.g., chuck adapter, nail, clip, coin, etc.) near the battery and charger. Such metal can cause a short and result in fire.
- ▶ **Do not expose the battery or charger to wet or humid environments.** Keep it dry at all times. If it is wet, overcurrent may occur, causing overheating, fire, electric shock or fault.
- ▶ **Do not keep the battery or charger together with small metallic pieces** (e.g., screw, metallic adapter, nail, solder wire, cross bit, drill bit, metal clip/powder, etc.) in a plastic box or toolbox. Doing so can generate shorts and lead to fire or explosion.

6. Li-ion Battery Instructions

Li-ion batteries can give 100% performance when they are charged at any amount or are not completely discharged. ※ Li-ion batteries do not have a memory effect. What is 'memory'?

At first use or after being left unused for a long time, the battery has 70-80% of its original storage capacity.

- ▶ **Do not expose the battery to rain or water.** A battery short circuit causes overcurrent and can result in overheating, fire or faults.
- ▶ **After charging, make sure that the battery is stored with a cover.**
- ▶ **Use the proper batteries for each power tool.**
The use of wrong batteries may result in bodily injury or fire.
- ▶ **If a tool is continuously operated until a battery pack is discharged, cool it down at room temperature for about 10 minutes prior to battery replacement.**
This measure can reduce the risk of battery and tool damage.
- ▶ **If batteries are hot, make sure that they are cooled before being charged.** They have a NTC temperature sensor for charging at 0-45°C only, which in turn extends their lifespan. They will not charge in a different temperature range. If the temperature returns back to the normal range, charging will resume. If used in normal conditions, Li-ion batteries can be charged more than 2,000 times.
- ▶ **Secondary batteries have their lifespan as well.** If a battery life shortens, contact the customer service center for battery replacement.
- ▶ **Do not store batteries fully discharged. If they are left unused for a long time, make sure that they are charged.** If fully discharged, batteries may not charge anymore. Please contact the customer service center.
- ▶ **Do not disassemble the batteries under any circumstances. Keep them safe from external shock.** Short circuits may result in a fire or explosion.
- ▶ **Do not contact the positive and negative terminals with a metallic object.**
If batteries are stored with a metal component, necklace, hairpin or other metallic object, a short may occur and result in bodily injury, fire or explosion.

- ▶ **Make sure that positive and negative poles are right corresponded. Do not charge the battery when positive and negative poles are reversed.** Doing so can lead to a fire or explosion.
- ▶ **In the event of excessive use or at high temperature, electrolytes can spill from the battery.** If this touches the user's skin, wash off with soap immediately. If this gets into eyes, wash with clean water and see a doctor right away. This substance can cause vision loss. It can damage skin and cause burns.
- ▶ **If the battery is severely damaged or fully discharged, do not leave it near fire.** Doing so may result in fire or explosion.
- ▶ **If when the battery is dead, cover the terminals with insulation tape prior to disposal and have it collected by a professional battery collector or nearby representative agency.** Do not throw the battery into a trash can, fire or water. Doing so will cause environmental pollution and could lead to fire or explosion.
- ▶ **If any abnormalities such as heating is detected during charging, unplug the power cable immediately.** Failure to do so can lead to fire or explosion.

7. Li-ion Charger Instructions

- ▶ **Do not use the charger for purpose other than charging.**
Check the battery voltage prior to charging. Do not use unauthorized batteries. Use the batteries specified in the Manual only. Failure to do so may lead to fire or explosion.
- ▶ **Check the power plug and cord before using the charger.**
Any defect may result in a fault or electric shock.
- ▶ **Do not carry or hang the charger by the power cord. Do not unplug the cable from the outlet by the power cord.** Keep the charger safe from heat, moisture and sharp edges. Failure to do so may lead to a short circuit.
- ▶ **Do not carry or hang the charger by the power cord. Do not unplug the cable from the outlet by the power cord.** Keep the charger safe from heat, moisture and sharp edges. Failure to do so may lead to a short circuit.
- ▶ **If the charger is damaged or overheated, unplug the power cable immediately.** Charging under such abnormal conditions may lead to fire or explosion.
- ▶ **Do not charge the battery in a plastic box or closed toolbox.** Doing so may result in fire or explosion.
- ▶ **Do not connect the charger to the DC outlet, engine generator, booster and transformer.** Doing so may lead to fire or explosion.
- ▶ **Do not cover the vent during charging.** Make sure that no metal or steel chip enters into the hole as these may cause fire or explosion.
- ▶ **Do not use the charger in a closed space. Use in well-ventilated environments.**
- ▶ **Do not cover with cloth or any other material while charging.** Doing so may lead to fire.
- ▶ **Do not disassemble the charger.** Doing so may lead to fire or fault.
- ▶ **Unplug the power cable after charging.** Failure to do so may result in fire or explosion.

8. Services

- ▶ **To repair a power tool, battery and charger, contact our customer service center.** Make sure that genuine parts are used for such repair to extend their safety.
- ▶ **Ensure that power tools are under proper care and management. Check that they are undamaged and function normally.** It is also important to check all conditions which can influence the operation of tools. If any abnormality is detected, repair before use. Unless the tools are properly repaired and managed, an accident can occur.
- ▶ **If any problem is found, contact our authorized customer service center.**

【 Operating Instructions 】

◆ Tool Operation

▶ Cautions before Operation

In the event of overcurrent in the Li-ion battery, the current is cut off and the tool is stopped. The tool is automatically stopped to prevent battery damage at over-discharge. This function is designed to protect the Li-ion batteries.

※ **The surface of the gearbox can become heated during continuous load work.**

Put on gloves before operation to reduce the risk of burn accidents.

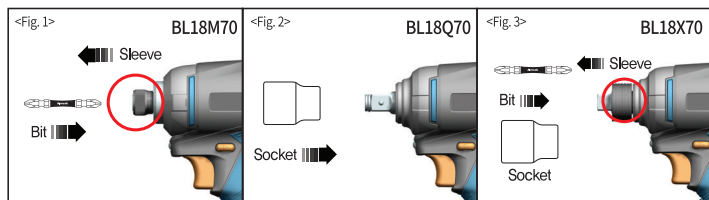
▶ How to insert the Bit (BL18M70, BL18X70) <See Fig.1>

- ① Set the switch in the OFF position, and move the forward/reverse lever to the neutral position.
- ② Pull the sleeve to arrow direction as Fig. 9, and insert the bit to HEX bit hole.
- ③ Release the sleeve to lock the bit.
- ④ Rock the bit back and forth to check if it is properly fixed.

▶ How to insert the Socket (BL18Q70, BL18X70) <See Fig.2,3>

Use a socket which fits the bolts and nuts. Otherwise, it may not be tightly fastened and can harm bolts and nuts.

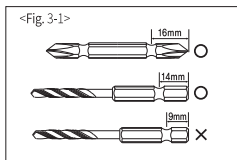
- ① Set the switch in the OFF position, and move the forward/reverse lever to the neutral position.
- ② Push forward the socket until it fits tightly as shown in Fig. 2
- ③ Rock the socket back and forth to check if it is properly fixed.



※ Both Driver bit and Wrench socket are available in BL18X70

△ **Caution** (BL18M70, BL18X70) <See Fig.1, 3, 3-1>

1. If the bit is not inserted properly into the sleeve, the sleeve will not return to its original position and the bit will not be secured in place. Place the bit properly according to above instruction.
2. Use the bit that has insert depth more than 14mm. Using short insert depth bit cause the fault. Using another bit support is recommended for short bit.



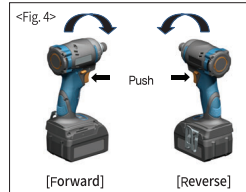
※ Above bits are not included

▶ Forward/Reverse Direction <See Fig. 4>

Forward: Screwing or drilling

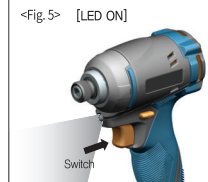
Reverse: Unscrewing

△ **Caution!** Please change revolution direction when the tool is stopped only



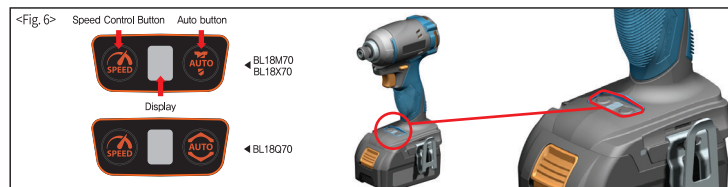
▶ Switch action <See Fig. 5>

The RPM is adjusted by the degree of triggering. To stop the tool, release the switch. Since the switch has a safety brake, the tool stops as soon as the switch is released. If the switch is pulled back, the front LED light is turned on for operation at night or in a dark place. If the tool stops, the LED light turns off in 10 seconds.



▶ Speed control display function <See Fig. 6>

Pressing speed control button turns on speed control display LED for several seconds. It changes to 3 Level > 1 Level > 2 Level > 3 Level each time pressing button. After setting speed control, it is stored in memory and stays even after changing the battery. Motor torque and no-load rpm per level setting is as follows.



※ **No load rpm & torque per speed level**

LED	No load speed			Torque		
	BL18M70	BL18Q70	BL18X70	BL18M70	BL18Q70	BL18X70
Level 3	3,400 rpm	2,700 rpm	3,100 rpm	210 N·m	315 N·m	210 N·m
Level 2	2,800 rpm	2,000 rpm	2,800 rpm	175 N·m	230 N·m	175 N·m
Level 1	1,200 rpm	1,000 rpm	1,200 rpm	115 N·m	130 N·m	115 N·m

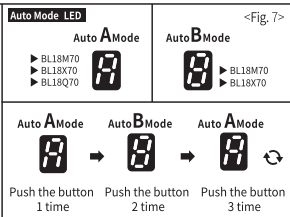
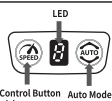
► Error Mode Display ※ Continuous over-load operation decreases tool performance

An error mode functions as follows in illumination LED:

Issue	Display	LED Indicator On Off	Handling Tips
Terminal contact failure		LED Off	check with authorized repair center or repair shop
High temperature battery protection		LED On 0.7s / Off 0.3s	Use the tool after rest for a whole. Do not overload the tool during the use.
High temperature switch protection		LED On 0.3s / Off 0.7s	Use the tool after rest for a whole. Do not overload the tool during the use.
Overcurrent shutdown		LED On 0.05s / Off 0.1s On 0.2s / Off 0.65s (2 times Flashing)	Avoid excessive work.
Motor sensor recognition error		LED On 0.5s / Off 0.5s	check with authorized repair center or repair shop
Low voltage		LED Off	Recharge battery

► AUTO Mode <See Fig. 7>

- 01 If pushing Auto button, Auto mode will keep maintaining until pushing speed control button
- 02 When using Auto mode if pushing speed control button, Auto mode will be off and change it to speed control mode.
- 03 If pushing Auto button, it will be off after Auto mode display LED will be on for a few seconds whenever pushing button one time, change A=B=A mode (but, BL18Q70 can be applied for A mode only)



Auto mode in No-load revolution

※ Operation phenomenon in no-load revolution while pushing Auto mode button

Item	Auto mode	Direction	Operation
BL18M70		Clockwise	Low speed revolution
BL18X70		Un-clockwise	High speed revolution
BL18Q70		Clockwise	High speed revolution
		Un-clockwise	High speed revolution
		Clockwise	High speed revolution
		Un-clockwise	Auto stop after 1 sec

⚠ Be aware of below. The phenomenon related with below is not a breakdown

- ※ Auto hold may not be working based on material state(rusty condition etc)
 - ※ There is auto off function to protect the tool after Max. 10secs if nut can not be un-tightened during the work
 - ※ It may be stopped & not applied impact with "beep" sound at the same time based on material state
- (This is because the work needs higher power than auto mode so level 2 or level 3 mode is better to applied than auto mode)

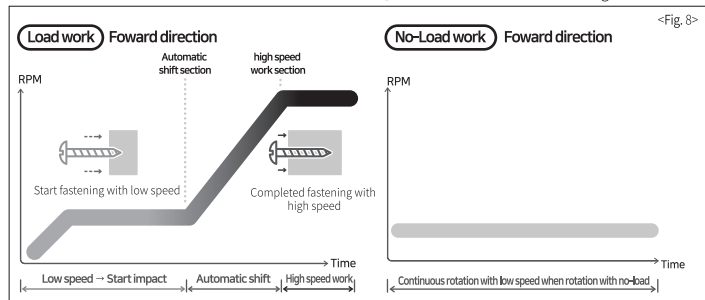
BL18M70, BL18X70 Auto A Mode

Low Speed → High Speed <See Fig. 8>

It is a function that is automatically changed from low speed to high speed for stable screw fastening with long screw in the wood.

Auto Screw Mode

- 01 Prevent screw breakaway
- 02 Fastening screw position precisely
- 03 Prevent screw head damage



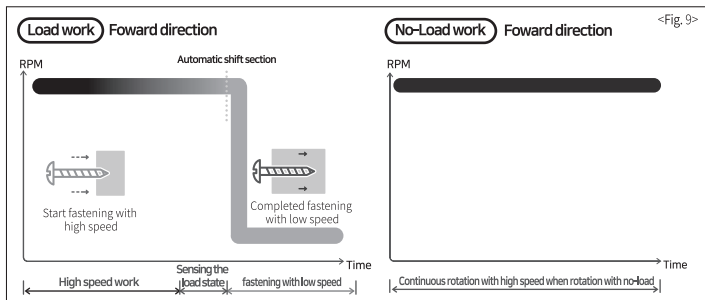
BL18M70, BL18X70 Auto B Mode

High Speed → Low Speed <See Fig. 9>

This is a function that protects the material and nut by reducing RPM & torque in the last part of screw fastening which impact is applied after fastening a screw with the highest speed from the beginning to the middle part when fastening the screw.

Auto Sash Mode

- 01 Prevent screw head damage
- 02 Convenient workability

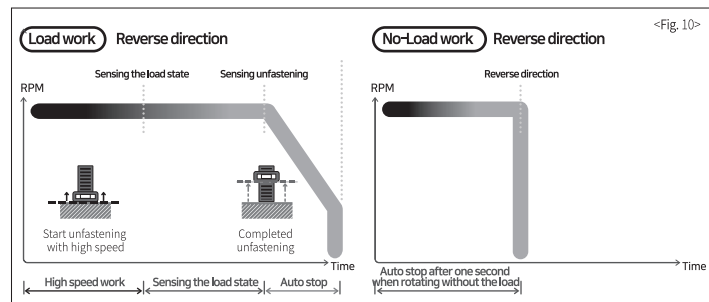


BL18Q70 Auto A Mode

Auto Stop Mode





High Speed  Auto stop <See Fig. 10>

Unfastening strongly fastened nut starts at high RPM and auto mode controls speed to low speed to prevent nut detaching from screw thread.

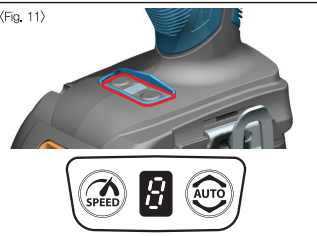


Battery Gauge Display <See Fig. 11>

LED of speed level display on top of tool lights up a couple of seconds when trigger is pulled. Check the battery remaining as below.

LED	Contents	LED	Contents
	3 lights on (over) 80%		1 lights on (over) 20~50%
	2 lights on (over) 50~80%		Blink 20% or less

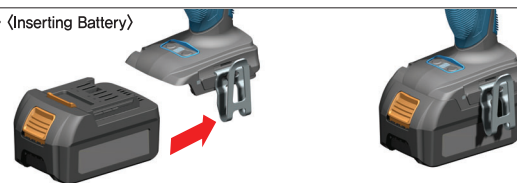
<Fig. 11>



Installing and removing battery <See Fig. 12-1, 12-2>

Do not use force when inserting the battery. To insert the battery, align the rail on the battery with the groove in the housing and slip into place. Always insert it all the way until it locks in place with a little click. If not, it may accidentally fall out of the tool.

<Fig. 12-1> (Inserting Battery)









1. Insert the battery all the way until it locks in place with a click as the picture.

<Fig. 12-2> (Removing Battery)








1. Push the button as the picture.
2. Withdraw it from the tool while sliding the button

Applicable Charger per Battery

Voltage	Battery		Applicable Charger		
18V		B40L18B	   ALC 4540 ALC 4560 ALC 4640M		
		B40L18A B52L18A			
		B40L18D B40L18DF B50L18D B50L18DF B60L18D B60L18DF			

► Charger LED display indication (ALC 4540, ALC 4560, ALC 4640M)

Indicators	Meaning
Standby  ► Green LED blinking	► Ready for charging
Charging  ► Red LED on	► Charging battery
Finish  ► Green LED on	► Battery fully charged
Battery High Temperature  ► Red & Green LED on	► Charging is on hold due to out of possible charging temperature range of battery. (0~45°C) (Charging automatically starts when battery temperature reaches allowable temperature range.)
Battery low voltage  ► Red & Green LED on	► Charger is in pre-charging mode due to low voltage of battery. (Charging automatically starts when battery voltage reaches allowable range.)

► Battery Charger Troubleshooting

1. LED light is not turned on when the battery is inserted

Cause	Solution
The power cord is not plugged in.	Check the power connection.
Contact error because the charger terminal is corroded or bent.	Check the charger and battery terminals.
Battery is short-circuited.	Insert another battery, and check if the charger functions normally.

2. Any colored LED light other than red is turned on when the battery is inserted

Cause	Solution
Battery temperature is high.	If the battery is hot, the green and red LED lights will be turned on simultaneously. Wait until the battery is cooled enough, and then reinsert it.
Battery temperature is low.	If the battery is cold, the LED light is OFF even though it is inserted into a charger. Leave the battery at room temperature. Once battery temperature rises to a rechargeable level, reinsert the battery.
Battery is at low voltage.	If the battery remains at low voltage due to over-discharge, the green and red LED lights will be turned on simultaneously in the beginning. This is a trickle charge mode activated to protect the battery. Check if the battery has returned to normal (red LED light) in a few minutes.

※ If the problem continues despite the said actions, contact designated repair center by Aimsak or the customer service center.

【Maintenance & Storage】

Make sure that the switch is turned off and the power supply disconnected before repair and maintenance. Keep the tool and vents clean at all times for safe and right operation.

► Check and clean the tool regularly.

◆ Noise / Vibration

► Wear earplugs.

► According to measurement under EM 50260-1:199, the average noise level of 'A' is 78 dB(A) or below. During operation, noise can exceed 85 dB(A). The standard violation applied to the hands and arms is 2.5m/sq or less.

【Warranty】

► **The term of warranty for the product is one year from the date of purchase. Unless the date of purchase is specified, the date of manufacture is applied.** However, please note whether the problem falls under the category of a paid warranty even during warranty period.

- The term of the warranty for the motor and battery is 6 months from the date of purchase.
- The battery is a consumable item. If the battery life ends, a new one must be purchased.

► Paid Warranty Guidelines

- User negligence (soaking, external shock, overload work, etc.)
- Natural disaster (fire, earthquake, etc.)
- Product was randomly disassembled by the user
- A fault resulting from repair or remodeling by a person/company other than Aimsak (or authorized agency)
- A fault arising from operation in unusual work environments
- Consumable items which become less efficient over time (carbon brush, bearing, sealing, power cord, chuck, etc.)
- Bit, hand tools, giveaway, promotional gift (e.g., lantern)

Use the product within the scope of operation specified in the Manual.

Failure to do so may result in product damage, reduction of lifespan or bodily injury. We shall not be responsible for such problems and they will not be covered by the warranty.